

# Carleton Tower - Executive Suites

Private executive floor (4 suites) with concierge, meeting spaces, on-site IT support and parking.

6th Floor, 19 Wall Street, Cybercity, Ebene 72201 - Mauritius



## Why this floor works

- Four private suites (27-48 sqm), delivered unfurnished unless agreed otherwise.
- Concierge welcome hall, reception area, boardroom (24+ sqm) and private meeting room (~15 sqm).
- 100 Mbps Wi-Fi with repeaters across the floor and on-site IT support Mon-Fri 08:00-17:00.
- Restricted sixth-floor access, CCTV, and 2 private parking bays or more per suite.

## Included shared spaces

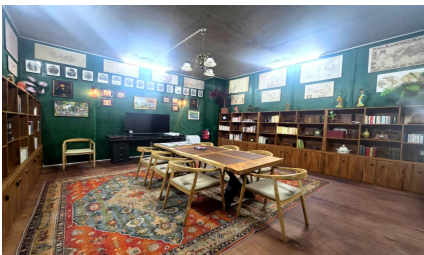
- Boardroom with British vintage colonial character
- Private lounge / meeting room for discreet conversations
- Two fitted kitchens with fridge, microwave, hot/cold water and dining corner
- 2 ladies toilets + 2 gents toilets; air-conditioning on request

## Suites

Suite	Area	Highlights
601	27 sqm	Large bay windows, panoramic view
602	45 sqm	Large private office with bay windows
603	35 sqm	Rear-facing bay windows
604	48 sqm	More secluded, near the lounge

## Included meeting quota (monthly, by reservation)

Suite	Boardroom	Meeting room
601	6 hrs	4 hrs
603	8 hrs	6 hrs
602	10 hrs	8 hrs
604	10 hrs	8 hrs



Call / WhatsApp: +230 650 0690 | Email: [info@bramston.co](mailto:info@bramston.co)

Viewings by appointment. Availability and terms on request. Photos show actual spaces; configuration and availability may vary.